

The logo for ZowieTek, featuring the word "zowie" in a lowercase, sans-serif font and "Tek" in a bold, uppercase, sans-serif font. A red dot is positioned above the 'i' in "zowie". A red curved line underlines the text.

zowieTek

用户手册

	01
1.1	01
1.2	01
	01
2.1	02
2.2	02
	05
3.1.	05
3.2.	08
	08
4.1.	08
4.2.	09
	09
	10
6.1.	10
6.2.WEB	12
6.3.	12
6.4.	13
6.5.	13
6.6.	13
6.7.	14
6.8.	14
FQA	15

1.1

E2

1.2

(1) IP

(2) VISCA ONVIF PELCO-P PELCO-D VISCA

(3)

(4)

(5)

(6) IE

(7) 7

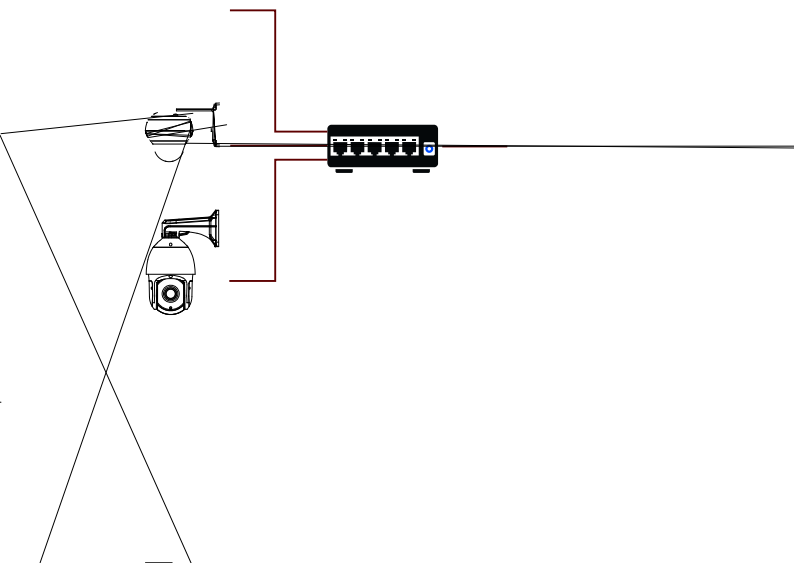
(8) POE



2.2

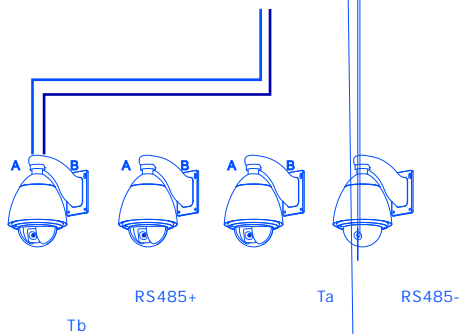
2.1.1.

VISCA ONVIF



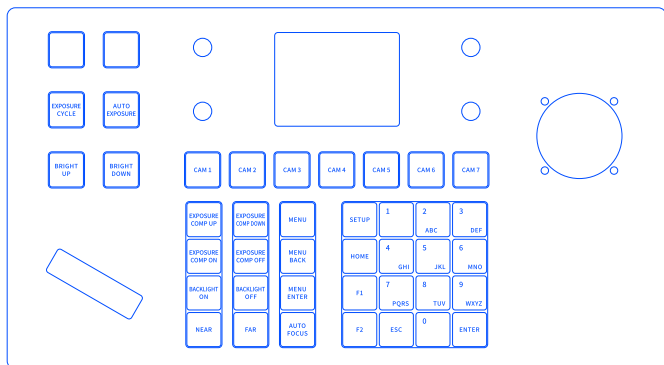
2.1.2 RS485

RS485



2.2.3

RS422



		1-7
1		[ENTER]
		VISCA UDP SONY VISCA UDP VISCA TCP ONVIF .

2		1-7
		[ENTER]
3	/ ENTER	
4 /		ENTER
		IP
5	EN /	ENTER
6	/	ENTER
7		ENTER ESC
8		

[HOME]

[F1][F2]

[0-9] ()()

: 1

[1]

PRESET 1

[1]

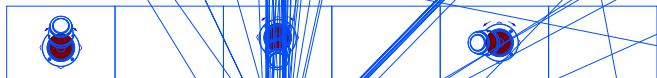
1

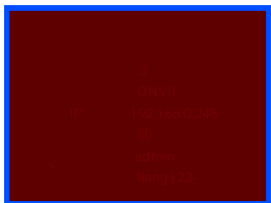
[ESC]

[ENTER]

[CAM1] [CAM2] [CAM3] [CAM4] [CAM5] [CAM6] [CAM7]

3.2



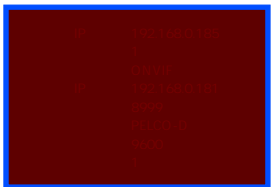


(2)

IP

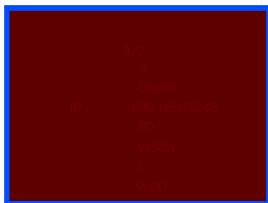
[ENTER]

4.2



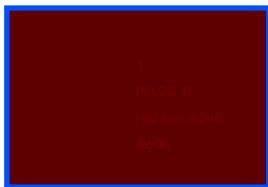
(1)

(2) SETUP



(3)

[ENTER]



(3)

1-7

ENTER

(1)

* SETUP*

ENTER



(2)

[ENTER]



(3)

IP

Ps :

,

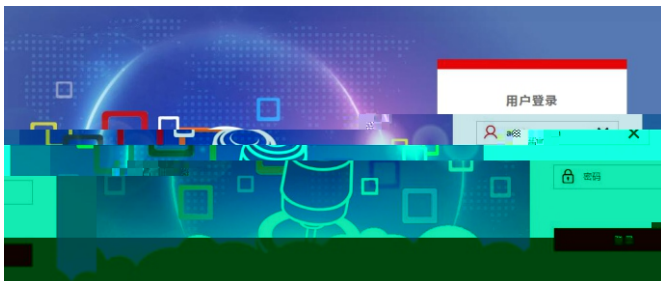
6.1

IP:192.168.x.xxx IP

:admin; :

(1)

IP




(2) :admin; :

(3) web , :

摄像机编号	IP地址	端口	协议(网络)	波特率	地址码	协议(模拟)	操作
1	192.168.0.170	1750	VISCA(UDP)	9600	1	PRCCD	

(4)

(5) "  :

编辑

摄像机编号

网络数据:

协议

IP地址

端口

模拟数据:

协议

波特率

地址码

IP

WEB

6.2 WEB



STATIC :

(DHCP)():

IP

" IP:xxx.xxx.xxx.xxx".

6.3

Ps:



6.4



6.5

6.6



6.7



6.8



FOIA

1 * * IP

2 * *

专业的直播摄像机、视频编解码、录像方案供应商

2218 1701

:021-50277371

:90950-222

2022 7

<https://www.zowietek.cn/>

<https://www.zowietek.cn/documents/>

<https://www.zowietek.cn/knowledge-base/>